

GREMO®

I050H



In its element.



The stability in longitudinal direction permits working on steep slopes even with full reach of the boom.
The operator's work environment is comfortable und ergonomic with low noise level, pleasant air condition and thanks to the large windows and the narrow pillars excellent visibility throughout the working area..



The 1050H can be equipped with SP55 I LF or SP45 I.



Eight wheels ensure excellent forward movement and carrying capacity.
The bogielift at the rear can be used, for instance, for fast entering thinning areas.



Option. The marking computer Dasa 4 with GPS can submit production data to the forwarder.

Strong as an Ox, nimble as a Panther.

The Gremo 1050H is a reliable harvester ideal for thinning and final cutting.

The new engine, strong as an ox, together with the big working pump produces sufficient hydraulic power for any imaginable situation. This means shorter working cycles and yet enough strength for operating in interaction the different functions. In other words: Better performance!

But, as you know, strength alone is not all. A harvester must also be flexible and safe to meet the requirements of forestry work. Therefore, we keep to our proven design with eight wheels. This

ensures excellent forward movement and ideal load distribution also on rough and soft ground. (It is even possible to put tracks on all bogies).

The automatically actuated bogie locks are one of the secrets behind the outstanding lateral and longitudinal stability of the 1050H. Other assets are the low centre of gravity and the ideal load distribution in longitudinal direction. And owing to the bogielift a considerably smaller turning radius is achieved.

Thus, our statement is justified: The 1050H is strong as an ox and nimble as a panther.

▼
Forest land may appear in many different shapes, but it is never smooth and even. Isn't it then a comfortable feeling to dispose of double bogies and work with a machine that stands absolutely firm even on difficult ground?



Greimo I050H

What is important for you?

Let us assume it is high profitability. It is then good to know that the I050H is designed for excellent performance under difficult conditions. We also know that service is essential for trouble-free work.

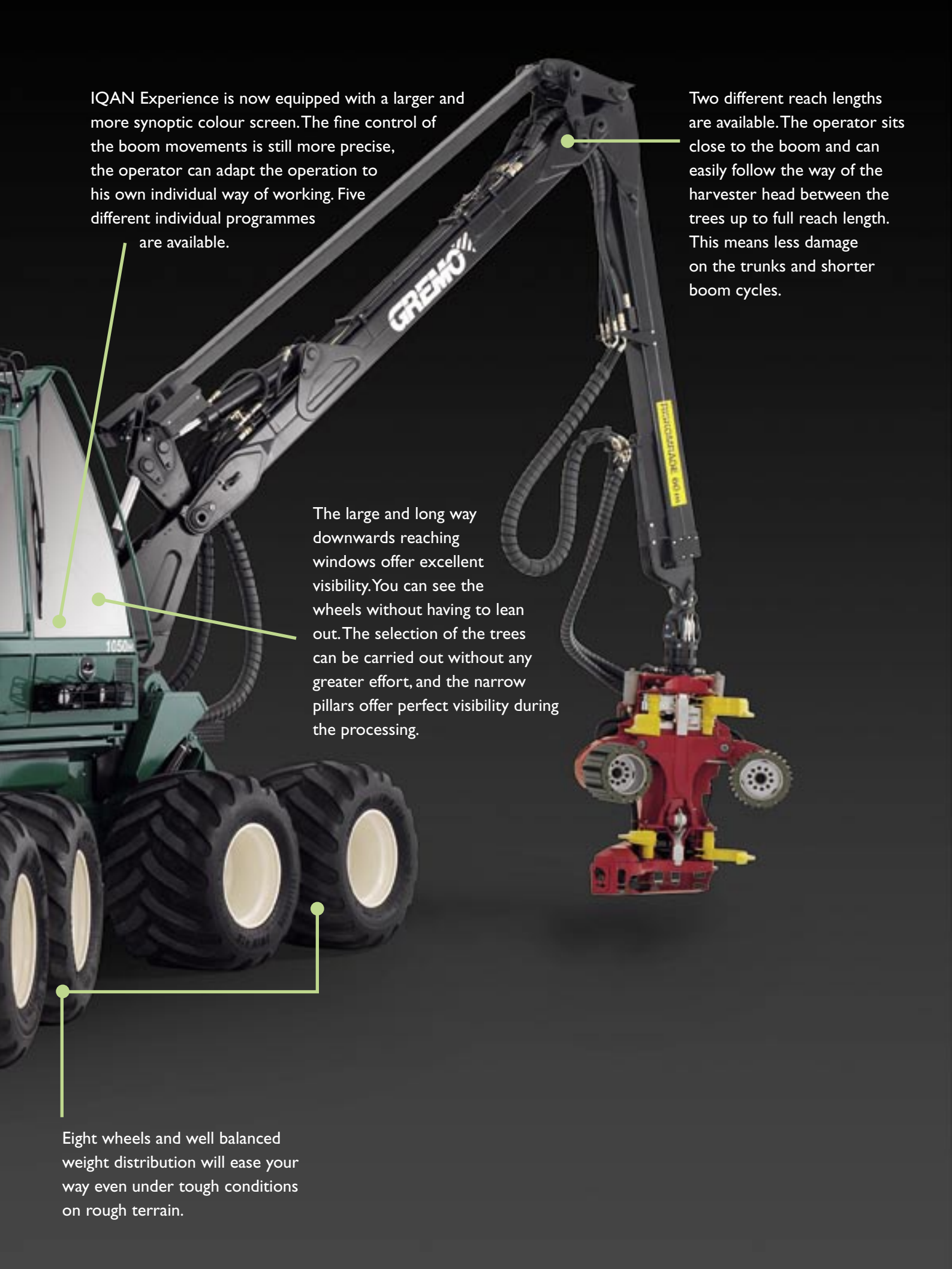
For this reason we have designed a service-friendly harvester and established a considerable number of service centres. These factors stand for a reliable machine with increased profitability.

Transport driving on roads is facilitated by the arrangement having the boom behind you and the steering in front of you. Owing to the Powershift you can shift gear without having to stop the vehicle. By this a higher average speed is achieved.

The cooling devices are arranged in that way that the radiator and the cooling device for the air-condition plant are accommodated in their traditional place, whereas the cooling devices for the working hydraulics and the hydrostat are positioned behind the cabin. The fans for these two are furnished with hydraulic drive. This special solution and the well ventilated engine house offer comfortable working conditions even on a hot summer day.

The ergonomic work place with all displays and controls within easy reach will make you get on well with your work.



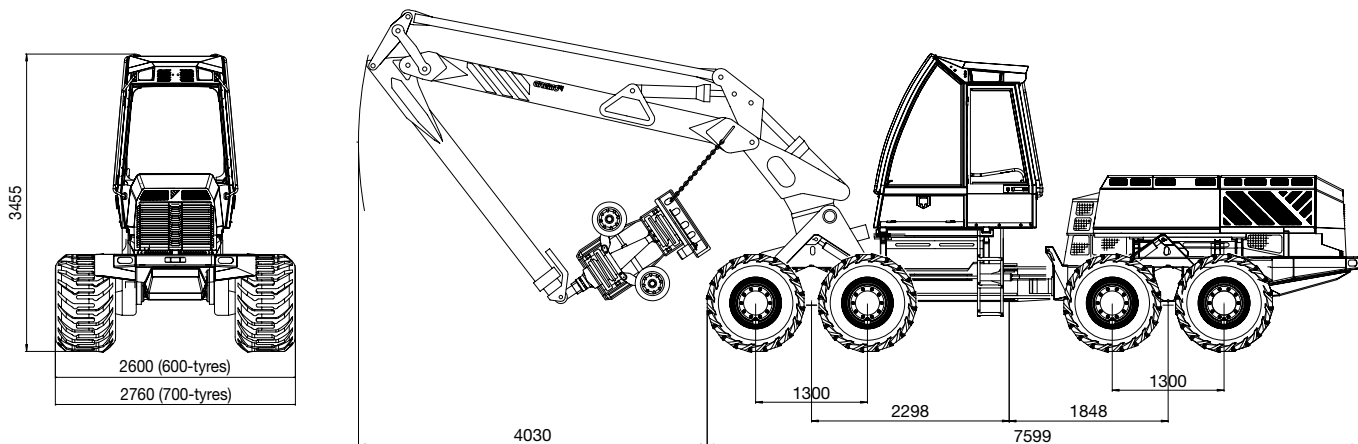


IQAN Experience is now equipped with a larger and more synoptic colour screen. The fine control of the boom movements is still more precise, the operator can adapt the operation to his own individual way of working. Five different individual programmes are available.

Two different reach lengths are available. The operator sits close to the boom and can easily follow the way of the harvester head between the trees up to full reach length. This means less damage on the trunks and shorter boom cycles.

The large and long way downwards reaching windows offer excellent visibility. You can see the wheels without having to lean out. The selection of the trees can be carried out without any greater effort, and the narrow pillars offer perfect visibility during the processing.

Eight wheels and well balanced weight distribution will ease your way even under tough conditions on rough terrain.



Weight with basic equipment 14 700 kg. Fuel tank: 330 Litres.

I 050H, Equipment

Vehicle, Standard	Cabin, Standard	Options
<ul style="list-style-type: none"> Compressor (air gun) Loglift 181V, 10 m SP 551 III root pruning 60 cm Trelleborg 600/50x22,5 Profile 428 Vehicle drive, engaging and disengaging control Middle joint and bogie locks on all bogies with automatic actuation. Bogielift with separate operation of righthand and lefthand bogies Diesel heater Vacuum pump Hydraulic ladder Hood, operated by electrical motor 2 tool compartments, special tools Sprinkler plant, 2 hand extinguisher Low lateral lights 2x4x70W 24V socket at fuel tank Tow hook front, pull rod rear Transport equipment (LGF plate, lighting, rear mirror) 	<ul style="list-style-type: none"> ECC Air-conditioning plant 12V and 24V sockets in instrument panel Safety glass panes 12 mm Opening side window (emergency exit) Interval screen wiper with parallel guide front and rear; one-wipe impulse button Wheel control Radio/CD, 4 loudspeakers Air-cushioned, electrically heated drivers seat, safety belt, neckrest Electrically braked seat rotation Mini levers Rear mirror Sun blind at front Prepared for telephone incl. aerial Cruise control IQAN Experience with tripmeter, Alarm, fault tracing 5 boom programmes 	<ul style="list-style-type: none"> Loglift 181V, 11.1m, Automatic levelling of tilting movement Boom damper of Gremo design Indexator slewing damper MPD single/double SP 451 root pruning 53 cm Trelleborg 710/40x22,5 profile 428 Trelleborg Steelbelt Nokian tyres Lighting of parallel rod Data caliper Colour marking Side screen wipers View camera at front, colour screen Air hose reel Wear irons for bogie cases Sun curtains Seat tilting Seat, ventilated Seat, side and lumbar cushions electric/air adjusted. 5-button mini levers Stump treatment 130 litres Dehydrating filter Tool kits, 4 off extra Xenon lights Bogie tracks/anti-skid chains GPS-navigation incl. operations follow-up

I050H, Technical Data	
Engine	Cummins, 6 cylinder, Turbo charger, Intercooler, Electronically governed injection.
Capacity (liters)	6,7
Torque (Nm) at rpm	949/1400
Power output kW (HP) at rpm	164 (220)/2000
Other	Two separate, electronically adjustable constant-speeds automatically actuated, EC stage-3 approved.
Transmission	
Tractive force net	More than 12 tons.
Hydrostatic drive	Computer controlled capacity control. Tank completely separated from the working hydraulics. Synthetic oil.
Gearbox	Power-Shift 2-steps gearbox. 1th gear 0 -9,1 km/h, 2nd gear 2,0 – 25 km/h.
Gearwheel bogies	Cast iron, roller path bearing.
Differential locks	Separately controlled with 100 % locking.
Hub reduction	On every wheel.
Steering system	Servo-steering. Electrical proportional terrain steering in separate lever.
Steering torque (kNm)	42
Steering angle	+/- 43°
Brakes	Four oil-immersed multiple-disc brakes in front and rear differentials. Parking and emergency brake actuating all multiple-disc brakes and actuated automatically in neutral.
Other	Foot pedals for forward/backward and driving speed. Warning system with fault indication in plain text and acoustic/optical signal. Fault tracing via computer.
Hydraulics	
Working hydraulics	Constant pressure/loadsensing system. Own tank completely separated from the hydrostatic hydraulics. Synthetic oil.
Pump (cc)	Variabel, 190
Working pressure (bar)	240
Other	Tanks with electrical re-filling device via filter. Thermostat controlled hydraulic fan for the cooling devices of hydrostat and working hydraulics.
Boom/Boom Control	
Loglift (V)	181
Reach length (m)	10,0
Gross lifting torque (kNm)	138
Other	IQAN Experience. individual programme storage for 5 operators.
Electrics	
Voltage (V)	24
Generator / Battery	175 / 2x750 (maintenance-free)
Other	Travel lights according to law.
Harvester Head/Measuring	
Type	SP 55I LF III with maximum root pruning 60 cm.
Delimbing diameter (cm)	43 tip-tip
Roller motors (cc)	Poclain 514, 560 alternatively 625
Other	The patented construction of the feed roller holder carries the trunk during processing. Automatic chain tensioner SC 100, auto-cut, loghold, quickcut, proportional pressure on pruning knives and feed rollers adjusted by Dasa4. Dasa4 with large colour screen, loose keyboard and Canbus communication. Prepared for GPS, e-mail etc

We reserve the right to change specification and design. The machines shown in the illustrations can be equipped with extras. All measures and values are approximate and apply to a standard machine.



Forest. Man. Gremo.

We work with the probably most valuable assets in this world: Forest and people.

Our challenge is to make you feel comfortable working with our machines, but also to develop, build and sell forestry machines apt to cause as

little harm to the forest as possible without renouncing efficiency and performance.

We are well on the way. Not less than 95% of our customers buy a Gremo machine again. Are you possibly one of those who have missed something?



You are never left alone

Gremo AB · Box 44 · SE-310 61 Ätran · Sweden
Tel. +46 (0)346 605 15 · Fax +46 (0)346 603 42
www.gremo.com